

SUMMARY							
<b>PLOT AREA=40952.15 Sq.Ft.</b>							
AREA UNDER BUILDINGS	11507.96 Sq.Ft.	28.10%	(B)				
RESIDENTIAL BLOCK	100 Sq.Ft.	0.24%	(C)				
AREA UNDER CHECK POST	200 Sq.Ft.	0.49%	(D)				
AREA FOR SUB STATION	11807.96 Sq.Ft.	28.83%					
TOTAL							
AREA UNDER GREEN PARKS	11141.20 Sq.Ft.	17.21%	(E)				
AREA UNDER PARKING	4645.50 Sq.Ft.	11.34%	(F)				
AREA UNDER ROADS	6853.0 Sq.Ft.	16.80%	(G)				
AREA FOR STP	400 Sq.Ft.	0.98%					
AREA UNDER STILT PARKING	2198 Sq.Ft.	5.36%	(H)				
TOTAL PARKING AREA	6843.50	16.71					
<b>OTHER AREAS</b>							
AREA FOR UGSR	300 Sq.Ft.	0.73%					
ONE CLUSTER							
G.F	F.F	S.F	T.F	F.F	F.F	S.F	TOTAL
2	4	4	4	4	4	4	26
TOTAL NO. OF CLUSTER=2							
TOTAL NO. OF FLATS=26X2=52 FLATS							
<b>AREA UNDER GREEN PARK</b>							
1) 49'-4 1/2" X 109'-6" = 5406.56 Sq.Ft.							
2) 1/2 X 87'-6" X 51'-0" + 100'-6" X 15' = 2331.25 + 1507.50 Sq.Ft.							
TOTAL AREA = 5406.56 + 3838.75 = 9245.31 Sq.Ft. (22.56%) (E)							
<b>AREA UNDER OPEN PARKING</b>							
1) 14'-0" X 75'-3" = 1050 Sq.Ft.							
2) 14' X 84'-6" = 1183 Sq.Ft.							
3) 20'-0" X 120'-7 1/2" = 2412.50 Sq.Ft.							
TOTAL AREA = 1050 + 1183 + 2412.50 = 4645.50 Sq.Ft. (11.34%) (F)							
<b>AREA UNDER STILT FOR PARKING</b>							
1) 14'-0" X 78'-6" = 1099 Sq.Ft.							
2) 14' X 78'-6" = 1099 Sq.Ft.							
TOTAL AREA = 1099 + 1099 = 2198 Sq.Ft. (5.36%) (H)							
<b>AREA UNDER ROADS</b>							
1) 35'-0" X 117'-6" = 4112.50 Sq.Ft.							
2) 18'-0" X 152'-3" = 2740.50 S.F.							
TOTAL AREA = 6853.0 Sq.Ft. (16.80%) (G)							

**PROPOSED HOUSING LAYOUT FOR SILVER OAK HEIGHTS AT ZIRAKPUR OF ROYAL ENCLAVE LTD.**

**AREA STATEMENT:-**

TOTAL PLOT AREA = 170'-0" X 196'-1" + 1/2 X 89'-6 1/2" X 170'-0" = 33340.40 + 1/2 X 15223.50 = 33340.40 + 7611.75 = 40952.15 Sq.Ft. (4550 Sq.Ft.)

**PERMISSIBLE COVERED AREA = 81904.30 Sq.Ft.**

F.A.R. = 2.0

**COVERED AREA OF TYPICAL CLUSTER OF BLOCK-1**

OF BLOCK-1 = 4X((43'-0" X 39'-9") - 4X(7'-4 1/2" X 6'-1 1/2" + 7'-4 1/2" X 8'-4 1/2" + 5'-6" X 6'-6" + 3'-9" X 17'-10 1/2" + 16'-7 1/2" X 8'-4 1/2" + 2X(8'-0" X 26'-10 1/2" + 2X(8'-0" X 26'-10 1/2" + 2X(1709.25) - 4X(45.17 + 61.76 + 139.23 + 35.75 + (2X213.86) - (6837.0 - 4X281.91 + 430)) = (6837.0 - 1557.64) = 5279.36 Sq.Ft.

**CIRCULATION AREA = 15'-6" X 34'-9" - 2X(8'-0" X 4'-0") = 538.62 - 2X32 = 538.62 - 64 = 474.62 Sq.Ft.**

**TOTAL COVERED AREA OF TYPICAL CLUSTER OF BLOCK-1 = 5279.36 + 474.62 = 5753.98 Sq.Ft.**

**STILT AREA FOR PARKING = 2X(14'-0" + 40'-3") - (2X(7'-4 1/2" X 8'-4 1/2" + 2X(7'-4 1/2" X 6'-1 1/2" + 2X563.50 - (2X61.76 + 2X45.17) = 1127.0 - (123.52 + 90.34) = 1127.0 - 213.86 = 913.14 Sq.Ft. (A)**

**GROUND COVERAGE = 5753.98 X 2 = 11507.96 Sq.Ft. (B)**

**AREA ON ALL FLOORS = G.F.F, F.F.S.F, T.F.F, F.F.S.F = (5753.98 - 913.14) + 5753.98 + 5753.98 + 5753.985 + 753.98 + 5753.98 + 5753.98 = 4840.84 + 34523.88 = 39364.72 Sq.Ft.**

**MUMTY AREA = 17'-0" X 18'-6" = 314.50 Sq.Ft.**

**TOTAL COVERED AREA OF CLUSTER OF BLOCK-1 = 39364.72 + 314.50 = 39679.22 Sq.Ft.**

**TOTAL COVERED AREA OF CLUSTER OF BLOCK-I = 39679.22 Sq.Ft.**

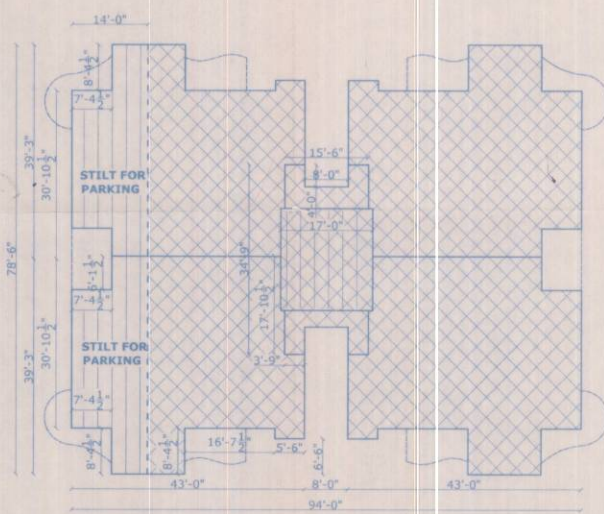
**TOTAL COVERED AREA OF BLOCK-I & II = 39679.22 + 39679.22 = 79358.44 Sq.Ft.**

**AREA FOR CHECK POST = 10'-0" X 10'-0" = 100 Sq.Ft. (C)**

**AREA FOR SUB STATION = 20'-0" X 10'-0" = 200 Sq.Ft. (D)**

**TOTAL COVERED AREA = 79358.44 + 100 + 200 = 79658.44 Sq.Ft.**

F.A.R. = 1.95



ARCHITECT'S SIGNATURE: CREATIVE CONSORTIUM ARCHITECTS

OWNER'S SIGNATURE: [Signature]

TITLE: GROUND FLOOR PLAN & TYPICAL FLOOR PLAN

SCALE: 1'-0" = 1/16"

DLT. BY: BALWINDER

CHKD. BY: [Signature]

PROJ. NO.: CC/HP/2K5/NC/199

S.N.O.: [Blank]

DWG NO.: 01

DATE: 05-11-05



**CREATIVE CONSORTIUM**

ARCHITECTS, PLANNERS, CONSULTANTS, VALUERS, INTERIOR DESIGNERS

S.C.O 56, SWASTIK VIHAR, SECTOR 5, MANSA DEVI COMPLEX, PANCHKULA (HRY)

# 125, SECTOR 4, PANCHKULA-134112

PH. 576057, 585117; FAX: 0172-585375

WEBSITE: www.creativeconsortiumindia.com