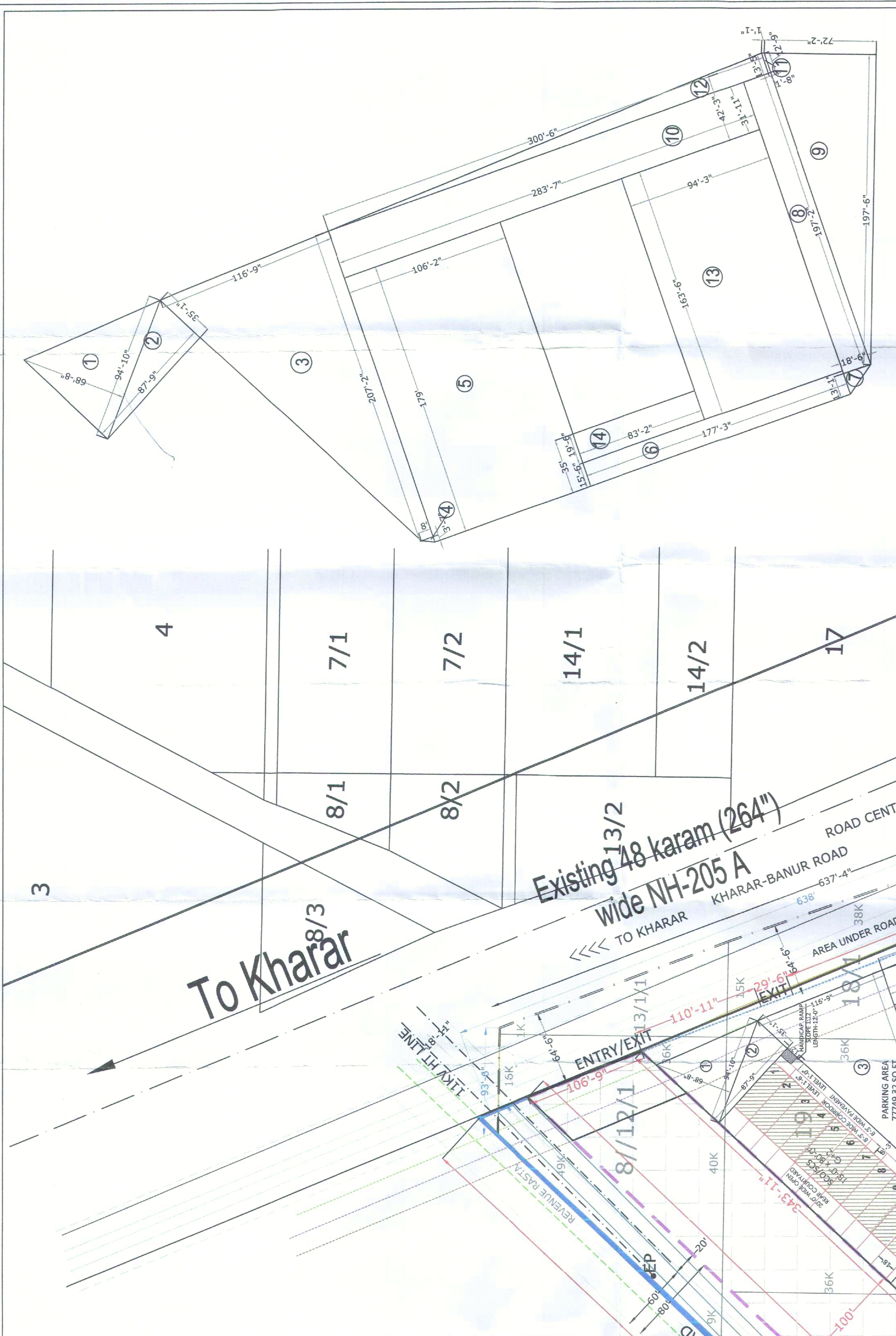


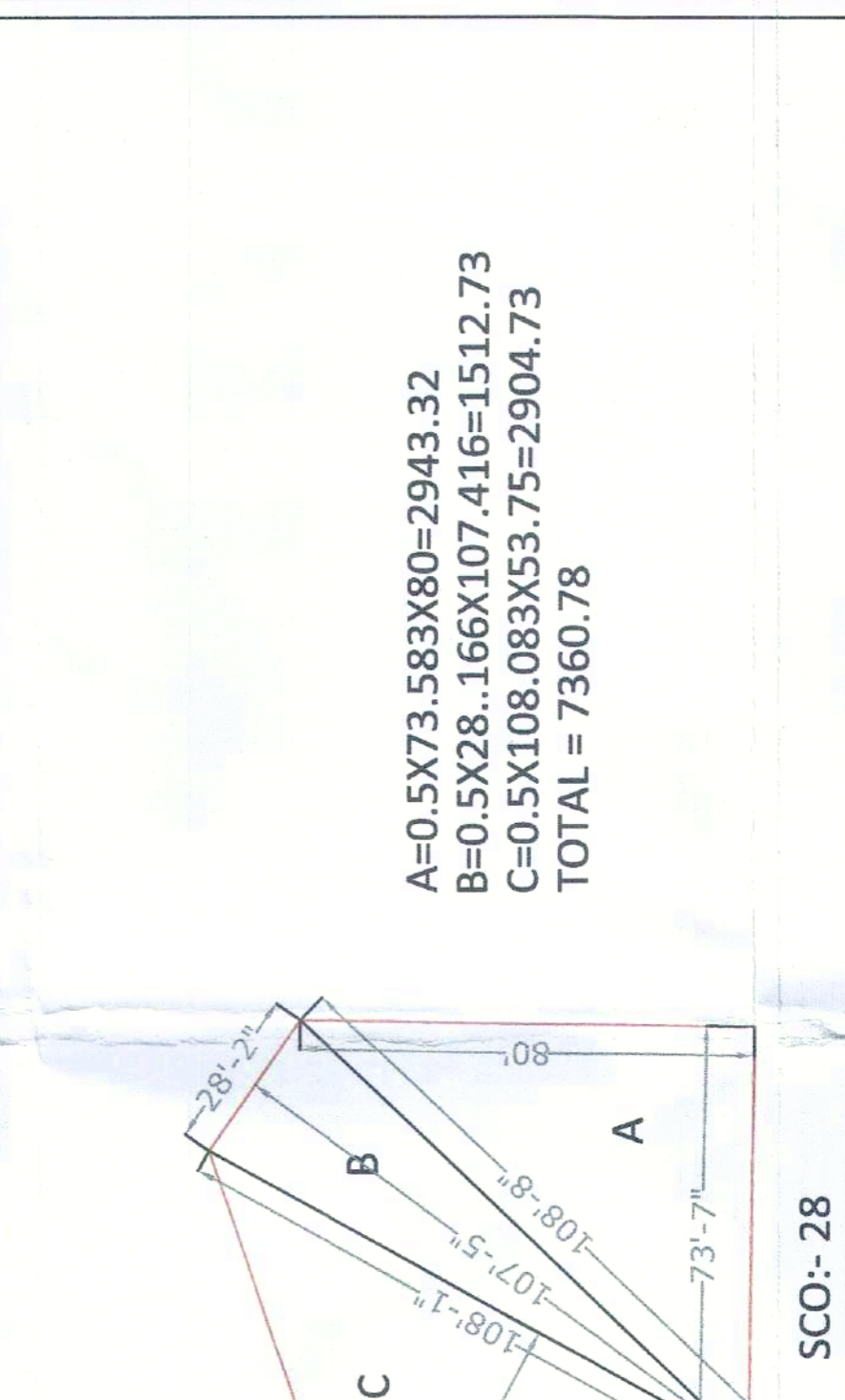
| TOTAL AREA OF SITE | | TOTAL AREA OF COMMERCIAL BLOCK | |
|--------------------|----------|--------------------------------|----------|
| 1 | 17371 | 1 | 17371 |
| 2 | 7262 | 2 | 7262 |
| 3 | 4209 | 3 | 4209 |
| 4 | 18344.04 | 4 | 18344.04 |
| 5 | 17351.08 | 5 | 17351.08 |
| 6 | 71440.78 | 6 | 71440.78 |
| 7 | 533.50 | 7 | 533.50 |
| 8 | 2891.10 | 8 | 2891.10 |
| 9 | 1665.30 | 9 | 1665.30 |
| 10 | 28817.88 | 10 | 28817.88 |
| 11 | | 11 | |
| 12 | | 12 | |
| 13 | | 13 | |
| 14 | | 14 | |
| 15 | | 15 | |
| 16 | | 16 | |
| 17 | | 17 | |
| 18 | | 18 | |
| 19 | | 19 | |
| 20 | | 20 | |
| 21 | | 21 | |
| 22 | | 22 | |
| 23 | | 23 | |
| 24 | | 24 | |
| 25 | | 25 | |
| 26 | | 26 | |
| 27 | | 27 | |
| 28 | | 28 | |
| 29 | | 29 | |
| 30 | | 30 | |
| 31 | | 31 | |
| 32 | | 32 | |
| 33 | | 33 | |
| 34 | | 34 | |
| 35 | | 35 | |
| 36 | | 36 | |
| 37 | | 37 | |
| 38 | | 38 | |
| 39 | | 39 | |
| 40 | | 40 | |
| 41 | | 41 | |
| 42 | | 42 | |
| 43 | | 43 | |
| 44 | | 44 | |
| 45 | | 45 | |
| 46 | | 46 | |
| 47 | | 47 | |
| 48 | | 48 | |
| 49 | | 49 | |
| 50 | | 50 | |
| 51 | | 51 | |
| 52 | | 52 | |
| 53 | | 53 | |
| 54 | | 54 | |
| 55 | | 55 | |
| 56 | | 56 | |
| 57 | | 57 | |
| 58 | | 58 | |
| 59 | | 59 | |
| 60 | | 60 | |
| 61 | | 61 | |
| 62 | | 62 | |
| 63 | | 63 | |
| 64 | | 64 | |
| 65 | | 65 | |
| 66 | | 66 | |
| 67 | | 67 | |
| 68 | | 68 | |
| 69 | | 69 | |
| 70 | | 70 | |
| 71 | | 71 | |
| 72 | | 72 | |
| 73 | | 73 | |
| 74 | | 74 | |
| 75 | | 75 | |
| 76 | | 76 | |
| 77 | | 77 | |
| 78 | | 78 | |
| 79 | | 79 | |
| 80 | | 80 | |
| 81 | | 81 | |
| 82 | | 82 | |
| 83 | | 83 | |
| 84 | | 84 | |
| 85 | | 85 | |
| 86 | | 86 | |
| 87 | | 87 | |
| 88 | | 88 | |
| 89 | | 89 | |
| 90 | | 90 | |
| 91 | | 91 | |
| 92 | | 92 | |
| 93 | | 93 | |
| 94 | | 94 | |
| 95 | | 95 | |
| 96 | | 96 | |
| 97 | | 97 | |
| 98 | | 98 | |
| 99 | | 99 | |
| 100 | | 100 | |

NOTE: GROUP HOUSING - 2, IS HYPOTHETICATED HYPOTHETICATED TO GHANA. THIS PROPERTY SHALL NOT TO BE SOLD/ALLOTTED/ DEVELOPED/ LEASED/ RENTED ETC.



PARKING DIAGRAM

| PARKING ADDITION | L | W | H | TOTAL AREA (Sq. Ft.) |
|------------------|--------|--------|-------|----------------------|
| 1 | 68.67 | 84.83 | 0.50 | 5855.99 |
| 2 | 35.08 | 87.75 | 0.50 | 3081.14 |
| 3 | 0.5 | 116.79 | 0.80 | 60.37 |
| 4 | 3.58 | 8.00 | 0.50 | 28.83 |
| 5 | 179.00 | 106.17 | 1.00 | 19003.71 |
| 6 | 15.58 | 18.25 | 0.00 | 283.88 |
| 7 | 15.58 | 18.25 | 0.00 | 283.88 |
| 8 | 197.47 | 18.50 | 1.00 | 3614.29 |
| 9 | 197.50 | 72.17 | 0.50 | 1426.99 |
| 10 | 31.02 | 283.58 | 1.00 | 8801.97 |
| 11 | 1.66 | 1.08 | 12.75 | 21.44 |
| 12 | 13.42 | 300.50 | 0.50 | 4015.75 |
| 13 | 103.50 | 84.25 | 1.00 | 8720.88 |
| 14 | 19.25 | 18.11 | 1.00 | 348.88 |
| 15 | 19.25 | 18.11 | 1.00 | 348.88 |
| 16 | 19.25 | 18.11 | 1.00 | 348.88 |
| 17 | 19.25 | 18.11 | 1.00 | 348.88 |
| 18 | 19.25 | 18.11 | 1.00 | 348.88 |
| 19 | 19.25 | 18.11 | 1.00 | 348.88 |
| 20 | 19.25 | 18.11 | 1.00 | 348.88 |
| 21 | 19.25 | 18.11 | 1.00 | 348.88 |
| 22 | 19.25 | 18.11 | 1.00 | 348.88 |
| 23 | 19.25 | 18.11 | 1.00 | 348.88 |
| 24 | 19.25 | 18.11 | 1.00 | 348.88 |
| 25 | 19.25 | 18.11 | 1.00 | 348.88 |
| 26 | 19.25 | 18.11 | 1.00 | 348.88 |
| 27 | 19.25 | 18.11 | 1.00 | 348.88 |
| 28 | 19.25 | 18.11 | 1.00 | 348.88 |
| 29 | 19.25 | 18.11 | 1.00 | 348.88 |
| 30 | 19.25 | 18.11 | 1.00 | 348.88 |
| 31 | 19.25 | 18.11 | 1.00 | 348.88 |
| 32 | 19.25 | 18.11 | 1.00 | 348.88 |
| 33 | 19.25 | 18.11 | 1.00 | 348.88 |
| 34 | 19.25 | 18.11 | 1.00 | 348.88 |
| 35 | 19.25 | 18.11 | 1.00 | 348.88 |
| 36 | 19.25 | 18.11 | 1.00 | 348.88 |
| 37 | 19.25 | 18.11 | 1.00 | 348.88 |
| 38 | 19.25 | 18.11 | 1.00 | 348.88 |
| 39 | 19.25 | 18.11 | 1.00 | 348.88 |
| 40 | 19.25 | 18.11 | 1.00 | 348.88 |
| 41 | 19.25 | 18.11 | 1.00 | 348.88 |
| 42 | 19.25 | 18.11 | 1.00 | 348.88 |
| 43 | 19.25 | 18.11 | 1.00 | 348.88 |
| 44 | 19.25 | 18.11 | 1.00 | 348.88 |
| 45 | 19.25 | 18.11 | 1.00 | 348.88 |
| 46 | 19.25 | 18.11 | 1.00 | 348.88 |
| 47 | 19.25 | 18.11 | 1.00 | 348.88 |
| 48 | 19.25 | 18.11 | 1.00 | 348.88 |
| 49 | 19.25 | 18.11 | 1.00 | 348.88 |
| 50 | 19.25 | 18.11 | 1.00 | 348.88 |
| 51 | 19.25 | 18.11 | 1.00 | 348.88 |
| 52 | 19.25 | 18.11 | 1.00 | 348.88 |
| 53 | 19.25 | 18.11 | 1.00 | 348.88 |
| 54 | 19.25 | 18.11 | 1.00 | 348.88 |
| 55 | 19.25 | 18.11 | 1.00 | 348.88 |
| 56 | 19.25 | 18.11 | 1.00 | 348.88 |
| 57 | 19.25 | 18.11 | 1.00 | 348.88 |
| 58 | 19.25 | 18.11 | 1.00 | 348.88 |
| 59 | 19.25 | 18.11 | 1.00 | 348.88 |
| 60 | 19.25 | 18.11 | 1.00 | 348.88 |
| 61 | 19.25 | 18.11 | 1.00 | 348.88 |
| 62 | 19.25 | 18.11 | 1.00 | 348.88 |
| 63 | 19.25 | 18.11 | 1.00 | 348.88 |
| 64 | 19.25 | 18.11 | 1.00 | 348.88 |
| 65 | 19.25 | 18.11 | 1.00 | 348.88 |
| 66 | 19.25 | 18.11 | 1.00 | 348.88 |
| 67 | 19.25 | 18.11 | 1.00 | 348.88 |
| 68 | 19.25 | 18.11 | 1.00 | 348.88 |
| 69 | 19.25 | 18.11 | 1.00 | 348.88 |
| 70 | 19.25 | 18.11 | 1.00 | 348.88 |
| 71 | 19.25 | 18.11 | 1.00 | 348.88 |
| 72 | 19.25 | 18.11 | 1.00 | 348.88 |
| 73 | 19.25 | 18.11 | 1.00 | 348.88 |
| 74 | 19.25 | 18.11 | 1.00 | 348.88 |
| 75 | 19.25 | 18.11 | 1.00 | 348.88 |
| 76 | 19.25 | 18.11 | 1.00 | 348.88 |
| 77 | 19.25 | 18.11 | 1.00 | 348.88 |
| 78 | 19.25 | 18.11 | 1.00 | 348.88 |
| 79 | 19.25 | 18.11 | 1.00 | 348.88 |
| 80 | 19.25 | 18.11 | 1.00 | 348.88 |
| 81 | 19.25 | 18.11 | 1.00 | 348.88 |
| 82 | 19.25 | 18.11 | 1.00 | 348.88 |
| 83 | 19.25 | 18.11 | 1.00 | 348.88 |
| 84 | 19.25 | 18.11 | 1.00 | 348.88 |
| 85 | 19.25 | 18.11 | 1.00 | 348.88 |
| 86 | 19.25 | 18.11 | 1.00 | 348.88 |
| 87 | 19.25 | 18.11 | 1.00 | 348.88 |
| 88 | 19.25 | 18.11 | 1.00 | 348.88 |
| 89 | 19.25 | 18.11 | 1.00 | 348.88 |
| 90 | 19.25 | 18.11 | 1.00 | 348.88 |
| 91 | 19.25 | 18.11 | 1.00 | 348.88 |
| 92 | 19.25 | 18.11 | 1.00 | 348.88 |
| 93 | 19.25 | 18.11 | 1.00 | 348.88 |
| 94 | 19.25 | 18.11 | 1.00 | 348.88 |
| 95 | 19.25 | 18.11 | 1.00 | 348.88 |
| 96 | 19.25 | 18.11 | 1.00 | 348.88 |
| 97 | 19.25 | 18.11 | 1.00 | 348.88 |
| 98 | 19.25 | 18.11 | 1.00 | 348.88 |
| 99 | 19.25 | 18.11 | 1.00 | 348.88 |
| 100 | 19.25 | 18.11 | 1.00 | 348.88 |



SC0-28

A=0.5X73.583X80=2943.32
B=0.5X28.166X107.416=1512.73
C=0.5X108.083X53.75=2904.73
TOTAL = 7360.78

DESIGN CONSULTANT :-
NEEV
ARCHITECTS & ENGINEERS
THE FOUNDATION TO YOUR DREAMS
NEEV ARCHITECTS & ENGINEERS
#12A, TRICITY PLAZA
PEERMUCHALLA, ZIRAKPUR
+91-9915200101

DATE :- 05-06-2025
DRAWING TITLE :- LAYOUT PLAN
DRAWING NO :- 01
SHEET NO :- 01

ARCHITECT'S SIGNATURE
PROMOTER'S SIGNATURE

NOTES :-
WATER WORKS, SEWAGE TREATMENT PLANT AND SOLID WASTE MANAGEMENT (SWM) FOR GROUP HOUSING SITES WILL BE PROVIDED WITHIN THE RESPECTIVE GROUP HOUSING SITES. ALTHOUGH DUE CARE HAS BEEN TAKEN IN APPROVING THE LAYOUT PLANS AS PER TECHNICAL NORMS, BUT THIS APPROVAL IS NOT PROVIDING ANY RIGHT TO YOU TO VIOLATE ANY RULE/GUIDELINES OF THIS DEPARTMENT OR ANY OTHER DEPARTMENT AND ALSO NOT PROVIDE ANY RIGHT FOR ANY ILLEGAL CONSTRUCTION. IN CASE ANY VIOLATION FOUND AT ANY STAGE, YOU SHALL BE LIABLE TO GET THE LAYOUT PLAN REVISED ACCORDINGLY. THE APPROVAL IS SUBJECT TO DECISION OF ANY COURT CASE PREVAILING IN ANY HON'BLE COURT OF LAW, IF ANY.

DEVELOPERS :-
AERO GATEWAY CITY
SITE PLAN SHOWING
PROPOSED SITE OF MIXED USE
PROJECT
(RESIDENTIAL GROUP HOUSING
CUM COMMERCIAL COLONY)

PROJECT :-
AERO GATEWAY CITY
SITE PLAN SHOWING
PROPOSED SITE OF MIXED USE
PROJECT
(RESIDENTIAL GROUP HOUSING
CUM COMMERCIAL COLONY)

DEVELOPERS :-
GIP REALTY MANAGEMENT LLP
AT VILL. NAUGIARI (HB. NO. 282),
TEH. MOHALI, DIST. S.A.S. NAGAR

NOTES :-
WATER WORKS, SEWAGE TREATMENT PLANT AND SOLID WASTE MANAGEMENT (SWM) FOR GROUP HOUSING SITES WILL BE PROVIDED WITHIN THE RESPECTIVE GROUP HOUSING SITES. ALTHOUGH DUE CARE HAS BEEN TAKEN IN APPROVING THE LAYOUT PLANS AS PER TECHNICAL NORMS, BUT THIS APPROVAL IS NOT PROVIDING ANY RIGHT TO YOU TO VIOLATE ANY RULE/GUIDELINES OF THIS DEPARTMENT OR ANY OTHER DEPARTMENT AND ALSO NOT PROVIDE ANY RIGHT FOR ANY ILLEGAL CONSTRUCTION. IN CASE ANY VIOLATION FOUND AT ANY STAGE, YOU SHALL BE LIABLE TO GET THE LAYOUT PLAN REVISED ACCORDINGLY. THE APPROVAL IS SUBJECT TO DECISION OF ANY COURT CASE PREVAILING IN ANY HON'BLE COURT OF LAW, IF ANY.

DEVELOPERS :-
GIP REALTY MANAGEMENT LLP
AT VILL. NAUGIARI (HB. NO. 282),
TEH. MOHALI, DIST. S.A.S. NAGAR

PROJECT :-
AERO GATEWAY CITY
SITE PLAN SHOWING
PROPOSED SITE OF MIXED USE
PROJECT
(RESIDENTIAL GROUP HOUSING
CUM COMMERCIAL COLONY)